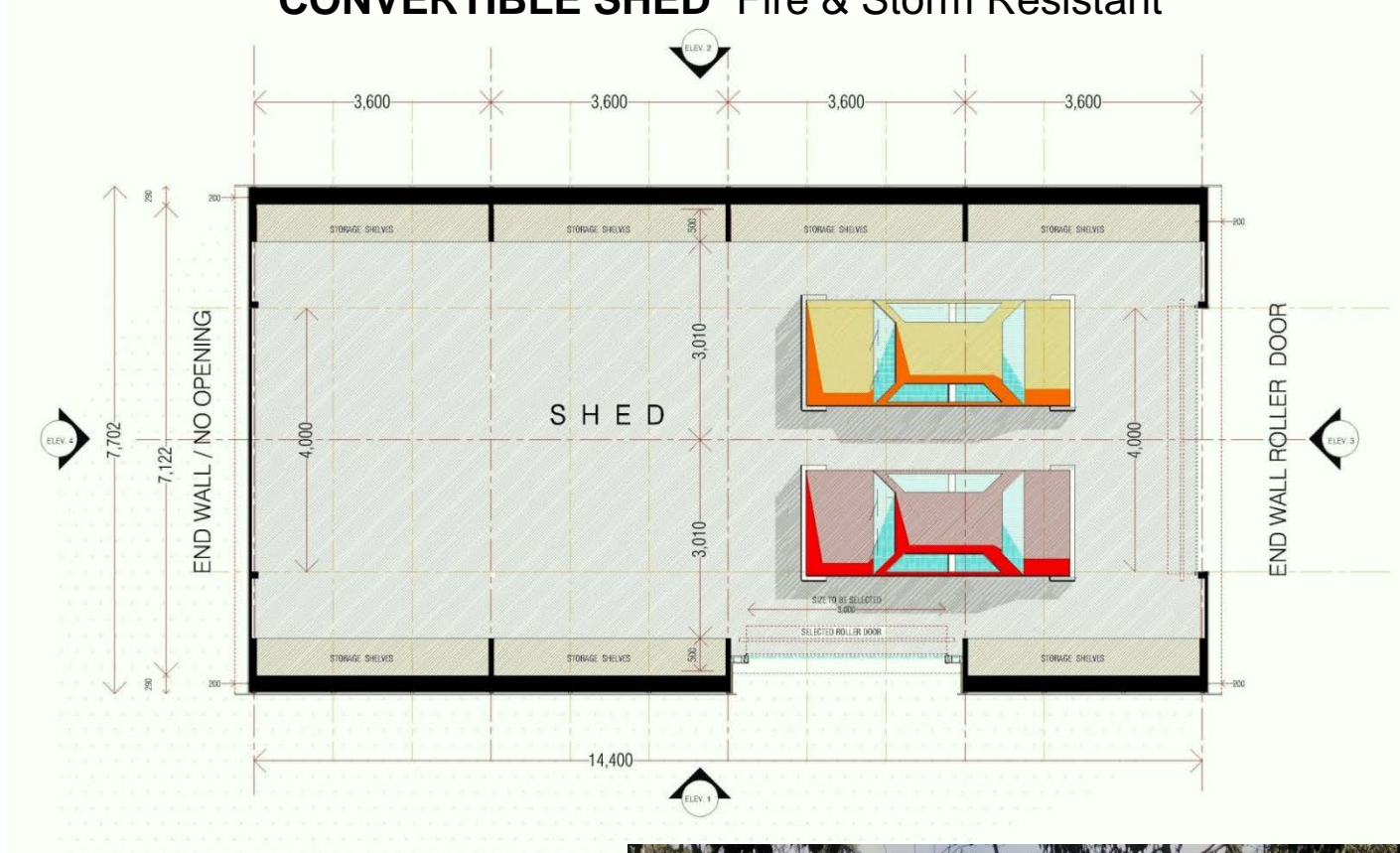


## “CONVERTIBLE SHED” Fire & Storm Resistant



### “CONVERTIBLE SHED” with **Awning** (as Pictured) 4 Bay, Size: 102m<sup>2</sup>

#### PRICING

(Ex. Melbourne – current pricing as at August 2018)

KIT from (Exc. GST) \$48,353

LOCKUP from (Exc. GST) \$87,205

FINISH \$ TBA

*Subject to finishes and selections*

Refer to *Features and Inclusions* and *Optional Extras* for more information.



Convertible Shed “Awning Option”

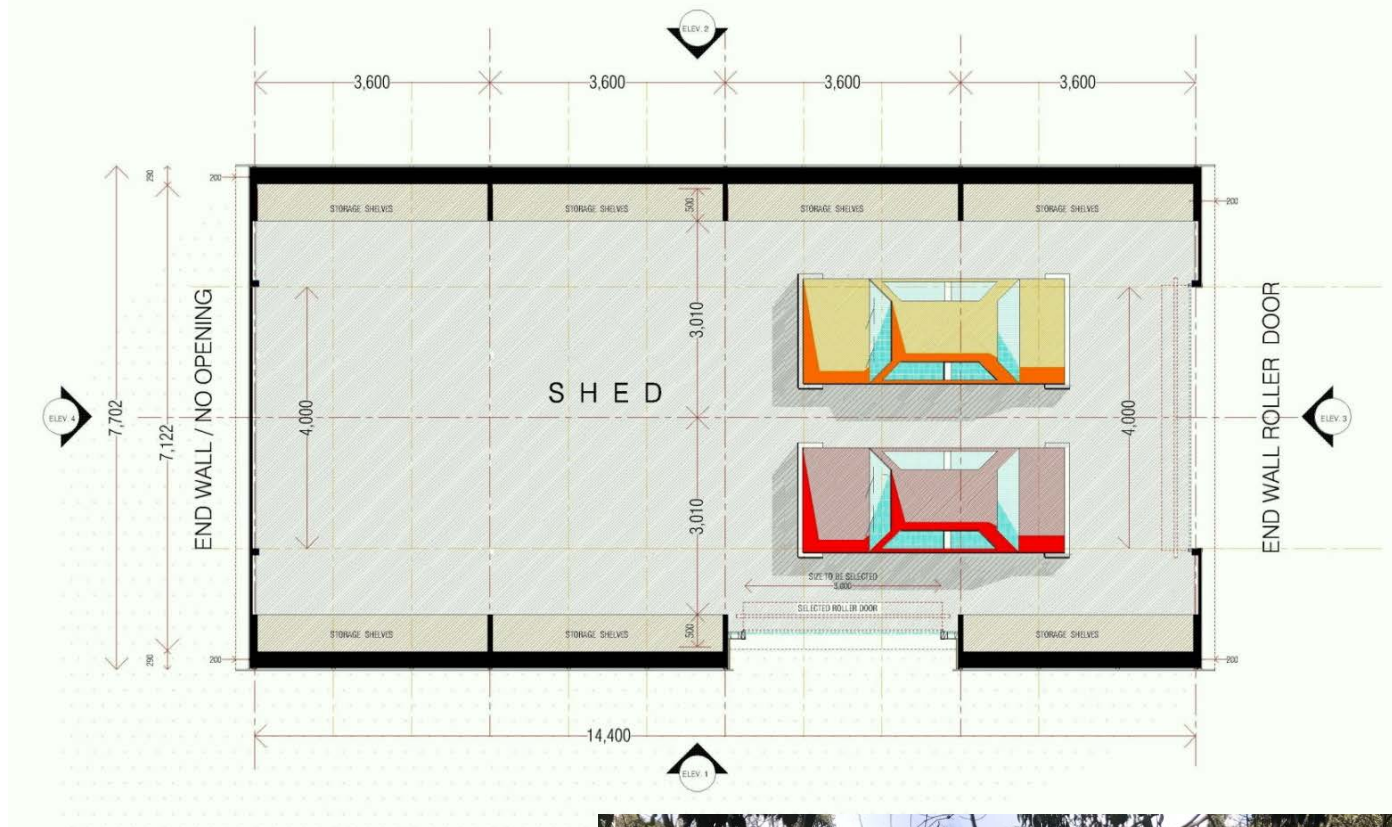
Multi-Award Winning Fire & Storm Resistant Buildings

Phone: 03 9642 7512

[www.designology.com.au](http://www.designology.com.au)



## “CONVERTIBLE SHED” Fire & Storm Resistant



### “CONVERTIBLE SHED” with Roller Door (as Pictured) 4 Bay, Size: 102m<sup>2</sup>

#### PRICING

(Ex. Melbourne – current pricing as at August 2018)

KIT from (Exc. GST) \$48,353

LOCKUP from (Exc. GST) \$87,205

FINISH \$ TBA

*Subject to finishes and selections*

Refer to *Features and Inclusions* and *Optional Extras* for more information.



Multi-Award Winning Fire & Storm Resistant Buildings

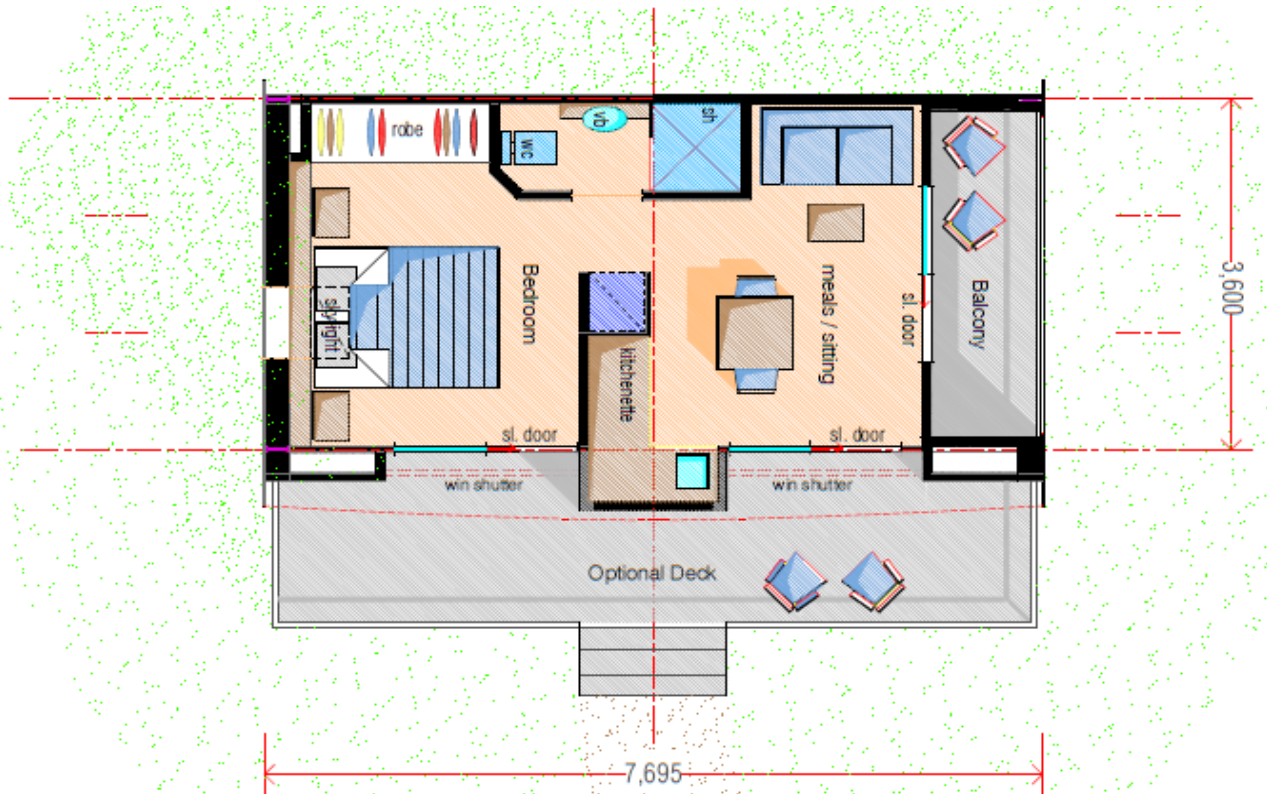
Phone: 03 9642 7512

[www.designology.com.au](http://www.designology.com.au)

CONVERTIBLE  
HOMES | BUILDINGS  
EVOLVED



## “BRIGHT” Compact Single Storey



### CONVERTIBLE HOME

“Compact” Single Bay (diagram / as quoted here)

Size: 29m<sup>2</sup> (Inc. Balconies)

Decking: 11m<sup>2</sup>

### PRICING *(Ex. Melbourne – current pricing as at May 2018)*

KIT from (Exc. GST)	\$33,350
Decking from (Exc. GST)	\$5,500

LOCKUP from (Exc. GST)	\$63,800
Decking from (Exc. GST)	\$9,350

FINISH	\$ TBA
	<i>Subject to finishes and selections</i>



Image shows 2 Bay Convertible

Multi-Award Winning Fire & Storm Resistant Buildings

Phone: 03 9642 7512

[www.designology.com.au](http://www.designology.com.au)



## “ECHUCA” 2 Bedroom “Compact” Single Storey



### CONVERTIBLE HOME 2 Bedroom “Compact” (2 Bay)

Size: 57m<sup>2</sup> (Inc. Balconies)

Decking: 35m<sup>2</sup>

**PRICING** (Ex. Melbourne – current pricing as at May 2018)

KIT from (Exc. GST) \$65,550

Decking from (Exc. GST) \$17,500

LOCKUP from (Exc. GST) \$125,400

Decking from (Exc. GST) \$29,750

FINISH \$ TBA

Subject to finishes and  
selections



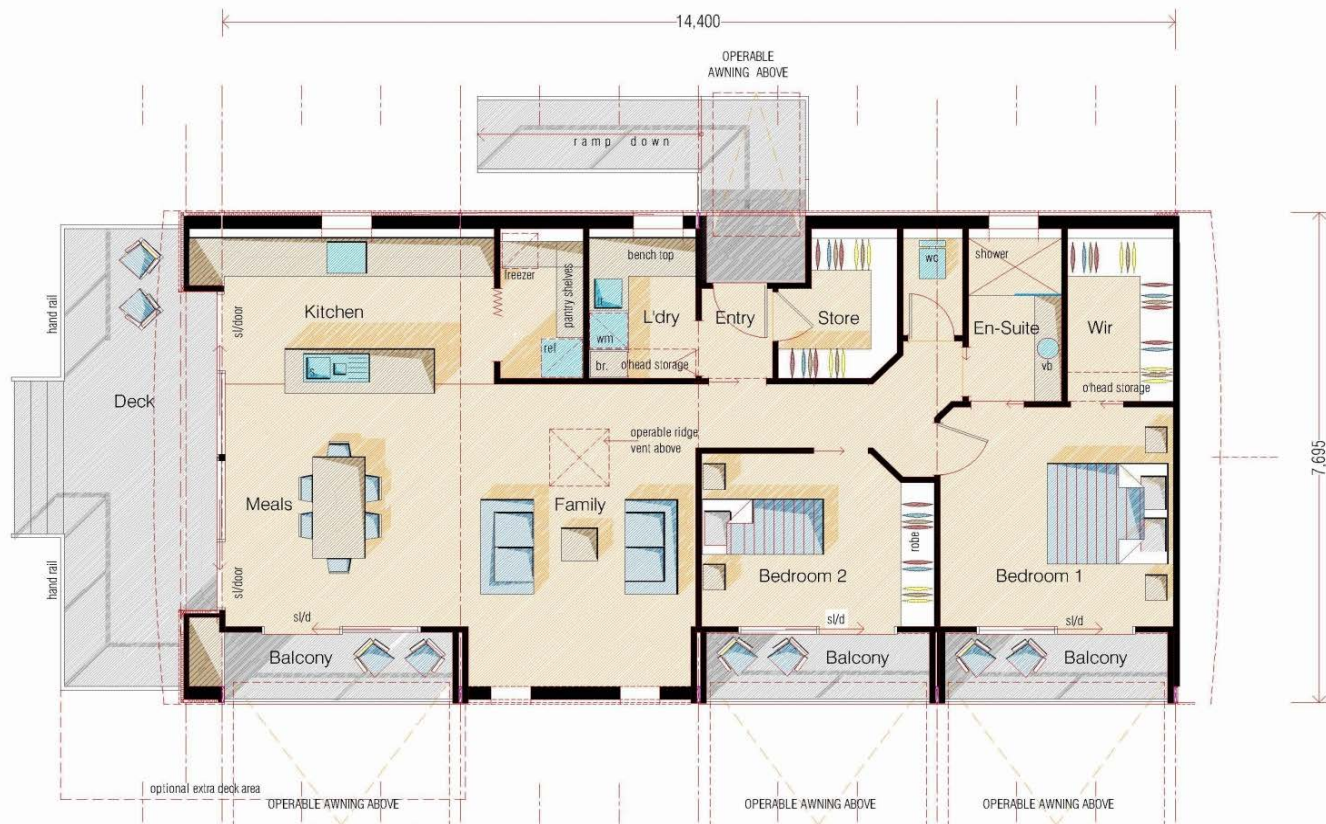
Multi-Award Winning Fire & Storm Resistant Buildings

Phone: 03 9642 7512

[www.designology.com.au](http://www.designology.com.au)



## “SCARSDALE” 1 Bed / 2 Bed (Study) Single Storey



### CONVERTIBLE HOME

1/2br (study) 1 Bath, Single Storey  
(4 Bay)

Size: 112m<sup>2</sup> (Inc. Balconies)

Decking: 13m<sup>2</sup>

### PRICING

(Ex. Melbourne – current pricing as at May 2018)

KIT from (Exc. GST)	\$128,800
Decking from (Exc. GST)	\$6,500

LOCKUP from (Exc. GST)	\$246,400
Decking from (Exc. GST)	\$11,050

FINISH	\$ TBA
	<i>Subject to finishes and selections</i>



“Scarsdale” Convertible Home

Multi-Award Winning Fire & Storm Resistant Buildings

Phone: 03 9642 7512

[www.designology.com.au](http://www.designology.com.au)



## “NEWHAVEN” 1 Bedroom (optional 2nd), Single Storey



### CONVERTIBLE HOME

1 Bedroom, Single Storey (3 Bay)

Size: 85m<sup>2</sup> (Inc. Balconies)

Decking: 13m<sup>2</sup>

### PRICING (Ex. Melbourne – current pricing as at May 2018)

KIT from (Exc. GST) \$97,750  
Decking from (Exc. GST) \$6,500

LOCKUP from (Exc. GST) \$187,000  
Decking from (Exc. GST) \$11,050

FINISH \$ TBA

Subject to finishes  
and selections



Image shows 4 Bay Convertible

Multi-Award Winning Fire & Storm Resistant Buildings

Phone: 03 9642 7512

[www.designology.com.au](http://www.designology.com.au)



## “RAYMOND ISLAND” 3 bed, Single Storey



### CONVERTIBLE HOME

3 Bedroom + Study, Single Storey (5 Bay)

Size: 140m<sup>2</sup> (Inc. Balconies)

Decking: 50m<sup>2</sup>

### PRICING

(Ex. Melbourne – current pricing as at May 2018)

KIT from (Exc. GST)	\$161,000
Decking from (Exc. GST)	\$24,000

LOCKUP from (Exc. GST)	\$308,000
Decking from (Exc. GST)	\$41,000

FINISH	\$ TBA
<i>Subject to finishes and selections</i>	



“Raymond Island” Convertible Home

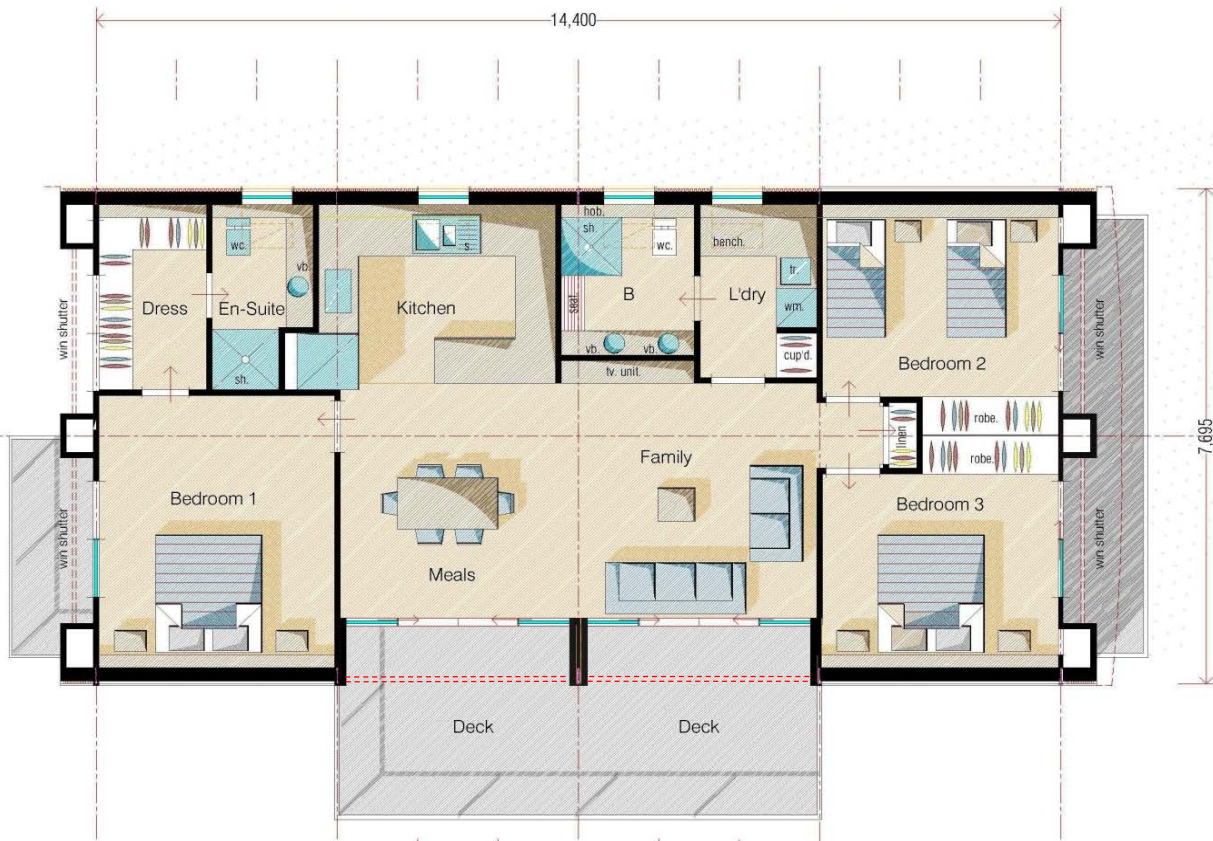
Multi-Award Winning Fire & Storm Resistant Buildings

Phone: 03 9642 7512

[www.designology.com.au](http://www.designology.com.au)



## “EPPALOCK” 3 Bed (Compact) Single Storey



### CONVERTIBLE HOME

3br (Compact) 1 Bath, Single Storey (4 Bay)

Size: 112m<sup>2</sup> (Inc. Balconies)

Decking: 15m<sup>2</sup>

### PRICING

(Ex. Melbourne – current pricing as at May 2018)

KIT from (Exc. GST)	\$121,852
Decking from (Exc. GST)	\$14,937
LOCKUP from (Exc. GST)	\$236,408
Decking from (Exc. GST)	\$24,384
FINISH	\$ TBA

*Subject to finishes  
and selections*



Image of “Scarsdale” 4 Bay Convertible

Multi-Award Winning Fire & Storm Resistant Buildings

Phone: 03 9642 7512

[www.designology.com.au](http://www.designology.com.au)

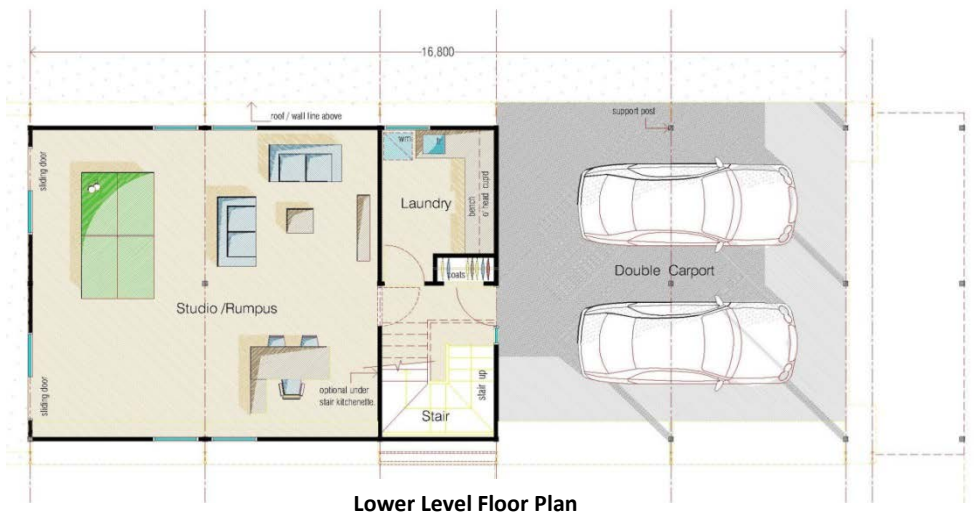


## “TRENTHAM”

### 3 / 4 Bedroom 2 Storey Convertible Home

Size: 2482 (Inc. Balconies)

Decking: 13m<sup>2</sup>  
Carport: 48m<sup>2</sup>



#### PRICING

*Ex. Melbourne – current pricing as at May 2018)*

KIT from (Exc. GST) \$263,000

Decking from (Exc. GST) \$4,850

LOCKUP from (Exc. GST) \$461,000

Decking from (Exc. GST) \$7,900

FINISH \$ TBA

*Subject to finishes  
and selections*





## “GEMBROOK”

Convertible Home 2 Bedroom,  
(+ Studio / Rumpus) 2 Storey  
(5 Bay)

Size: 196m<sup>2</sup> (Inc. Balconies)  
Decking: 13m<sup>2</sup>  
Carport: 48m<sup>2</sup>



Upper Level Floor Plan

### PRICING (Ex. Melbourne – current pricing as at May 2018)

KIT from (Exc. GST)	\$215,700
Decking from (Exc. GST)	\$4,849
LOCKUP from (Exc. GST)	\$376,000
Decking from (Exc. GST)	\$7,943
CARPORT (Exc. GST)	\$ TBA
FINISH (Exc. GST)	\$ TBA
<i>Subject to finishes and selections</i>	



Lower Level Floor Plan



“Gembrook” Convertible Home

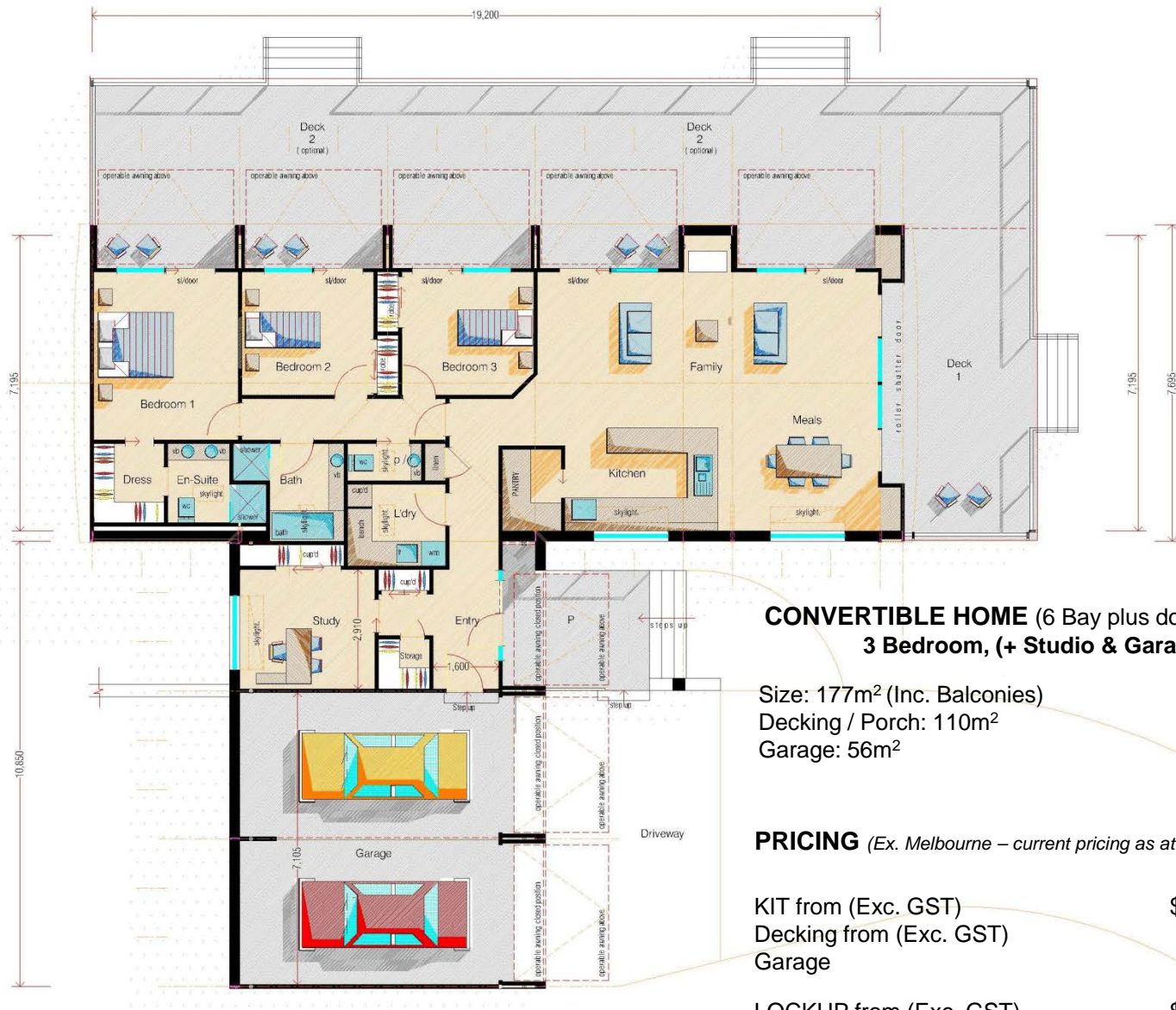
Multi-Award Winning Fire & Storm Resistant Buildings

Phone: 03 9642 7512

[www.designology.com.au](http://www.designology.com.au)



## “COCKATOO” T VERSION Convertible 3 Bedroom, plus Study & Garage



### CONVERTIBLE HOME (6 Bay plus double garage) 3 Bedroom, (+ Studio & Garage)

Size: 177m<sup>2</sup> (Inc. Balconies)  
Decking / Porch: 110m<sup>2</sup>  
Garage: 56m<sup>2</sup>

### PRICING (Ex. Melbourne – current pricing as at May 2018)

KIT from (Exc. GST)	\$208,000
Decking from (Exc. GST)	\$57,750
Garage	\$46,200

LOCKUP from (Exc. GST)	\$393,825
Decking from (Exc. GST)	\$96,250
GARAGE (Exc. GST)	\$85,400

FINISH (Exc. GST)	\$ TBA
-------------------	--------

*Subject to finishes  
and selections*

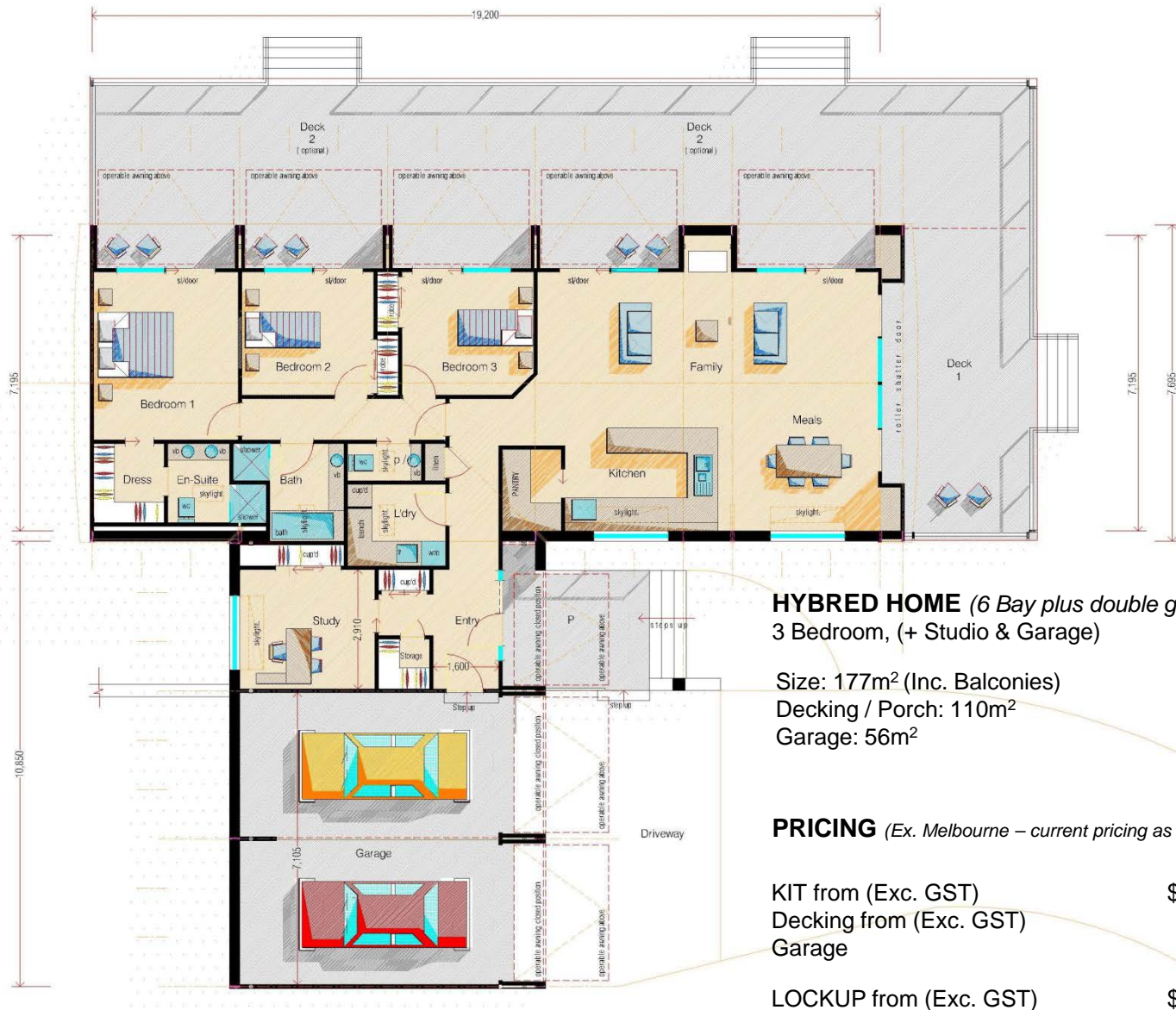
Multi-Award Winning Fire & Storm Resistant Buildings

Phone: 03 9642 7512

[www.designology.com.au](http://www.designology.com.au)



## “HYBRED” 3 Bedroom, plus Study & Double Garage



### HYBRED HOME (6 Bay plus double garage) 3 Bedroom, (+ Studio & Garage)

Size: 177m<sup>2</sup> (Inc. Balconies)  
Decking / Porch: 110m<sup>2</sup>  
Garage: 56m<sup>2</sup>

### PRICING (Ex. Melbourne – current pricing as at May 2018)

KIT from (Exc. GST)	\$163,725
Decking from (Exc. GST)	\$57,750
Garage	\$35,000

LOCKUP from (Exc. GST)	\$314,175
Decking from (Exc. GST)	\$68,600
GARAGE (Exc. GST)	\$85,400

FINISH (Exc. GST)	\$ TBA
-------------------	--------

*Subject to finishes  
and selections*

Multi-Award Winning Fire & Storm Resistant Buildings

Phone: 03 9642 7512

[www.designology.com.au](http://www.designology.com.au)



## CONVERTIBLE SHED FEATURES AND INCLUSIONS – LOCKUP STAGE

<b>Footings</b>	Concrete free footing system – Mega Anchor ground pile included	<b>Electrical</b>	Excluded
<b>Steel Frame</b>	Engineered Designed galvanised light gauge high tensile roof, wall and floor framing and fixings	<b>Roof Windows</b>	Optional BAL40 rated, powdercoated aluminium double glazed argon filled
<b>Roof &amp; Wall Cladding</b>	Standard Colorbond corrugated iron sheeting and fixings	<b>Painting</b>	Excluded
<b>Guttering &amp; Rainwater goods</b>	Colorbond half round guttering, fascias, flashings and cappings and associated clips and brackets	<b>Wind Rating</b>	Region 'A' (Note: As required in accordance with terrain ratings 'C' or 'D')
<b>Operable Awnings &amp; RSD</b>	Standard Colorbond corrugated iron cladding on light gauge high tensile framing including electric lineal actuators & remote controlled roller shutter door and associated brackets	<b>Delivery</b>	Included
<b>Ceiling Linings – Barrel vault section</b>	Excluded	<b>Erection</b>	Included
<b>Roof bracing – Barrel vault section</b>	Included	<b>Soil Classification</b>	Included
<b>Wall Linings</b>	Excluded	<b>Town Planning</b>	Excluded – This service can be provided at an additional cost
<b>Insulation</b>	Roof / Ceiling : 7mm (6.5mm)thk. Aircell Insulbreak 65 3-in-1 Insulation, thermal break, and vapour barrier External Walls : 7mm(6.5mm) thk. Aircell Insulbreak 65 3-in-1 Insulation, thermal break, and vapour barrier	<b>Building Permits</b>	Included subject to further clarification with local Authorities
<b>Flooring</b>	Optional 100mm Reinforced concrete floor	<b>Supervision</b>	Included
<b>Skylight</b>	POA		

Multi-Award Winning Fire & Storm Resistant Buildings

Phone: 03 9642 7512



## CONVERTIBLE SHED FEATURES AND INCLUSIONS – KIT

<b>Steel Frame</b>	Engineered Designed galvanised light gauge high tensile roof, wall and floor framing	<b>Flywire screens</b>	Excluded
<b>Roof &amp; Wall Cladding</b>	Colorbond corrugated iron sheeting	<b>Electrical</b>	Excluded
<b>Guttering &amp; Rainwater goods</b>	Colorbond half round guttering, fascias, flashings and cappings	<b>Energy Rating</b>	Excluded
<b>Operable Awnings &amp; RSD</b>	Colorbond corrugated iron cladding on steel framing including electric lineal actuators & optional remote controlled roller shutter door (Note: Designology to install and commission actuators)	<b>Wind Rating</b>	Region 'A' (Note: As required in accordance with terrain ratings 'C' or 'D')
<b>Ceiling Linings – Barrel vault section</b>	Excluded	<b>Delivery</b>	Included using intermodal transport and subject to site inspection
<b>Roof bracing – Barrel vault section</b>	Included	<b>Erection</b>	Excluded
<b>Wall Linings</b>	Excluded	<b>Soil Classification</b>	Excluded
<b>Insulation</b>	Roof / Ceiling : 7mm thk. Aircell Insulbreak 65 External Walls : 7mm thk. Aircell Insulbreak 65	<b>Town Planning</b>	Excluded – This service can be provided at an additional cost
<b>Flooring</b>	Excluded	<b>Building Permits</b>	Excluded
<b>Footings</b>	Excluded	<b>Supervision</b>	Excluded – Designology to provide site inspections at milestone stages
<b>Roof Windows</b>	Optional BAL 40 Rated Windows. POA.	<b>Skylight</b>	POA

Multi-Award Winning Fire & Storm Resistant Buildings

Phone: 03 9642 7512



## FEATURES AND INCLUSIONS – LOCKUP STAGE

<b>Footings</b>	Concrete free footing system - ground pile excluded	<b>Roof Windows</b>	Powdercoated aluminium Velux double glazed argon filled nominate the model level spec.
<b>Steel Frame</b>	Engineered Designed galvanised light gauge high tensile roof, wall and floor framing and fixings	<b>Flywire screens</b>	Powdercoated aluminium
<b>Roof &amp; Wall Cladding</b>	Standard Colorbond corrugated iron sheeting and fixings	<b>External steps / Ramp</b>	Galvanised steel stringers with aluminium treads included for level site width of 1200 to 2400 - standard 5 treads
<b>Guttering &amp; Rainwater goods</b>	Colorbond half round guttering, fascias, flashings and cappings and associated clips and brackets	<b>Decking</b>	15mm thk compressed cement sheet (or similar approved)
<b>Operable Awnings &amp; RSD</b>	Standard Colorbond corrugated iron cladding on light gauge high tensile framing including electric lineal actuators & remote controlled roller shutter door and associated brackets	<b>Balustrading</b>	Galvanised steel framed SHS uprights and rails with 50mm x 50mm galvanised steel mesh infill panels
<b>Internal Partition Walls</b>	90mm light gauge galvanised steel framing	<b>Lighting</b>	Excluded
<b>Ceiling Linings – Barrel vault section</b>	Excluded	<b>Electrical</b>	Excluded
<b>Roof bracing – Barrel vault section</b>	Included	<b>Plumbing</b>	Excluded
<b>Wall Linings</b>	Excluded	<b>Solar Hot Water*</b>	Excluded – Evacuated tube or flat plate solar with either instantaneous gas or electric booster can be designed and supplied at an additional cost
<b>Insulation</b>	Roof / Ceiling : 7mm (6.5mm)thk. Aircell Insulbreak 65 3-in-1 Insulation, thermal break, and vapour barrier External Walls : 7mm(6.5mm) thk. Aircell Insulbreak 65 3-in-1 Insulation, thermal break, and vapour barrier Internal Walls : Not Included	<b>Robes</b>	Excluded
<b>Flooring</b>	19mm T & G CD grade plywood flooring to living areas and 18mm thk compressed cement sheet to wet areas	<b>Cabinetry</b>	Excluded
<b>Windows &amp; Sliding Doors</b>	Powdercoated aluminium double glazed nominate the model level spec.	<b>Solar Power System *</b>	Excluded - Either grid connected or RAPS with battery storage and genset can be designed and supplied for remote locations to the required specifications at an additional cost

\* Optional Extra item not included in approximate cost

(page 1 of 2)

Multi-Award Winning Fire & Storm Resistant Buildings

Phone: 03 9642 7512

CONVERTIBLE  
HOMES | BUILDINGS  
EVOLVED



## FEATURES AND INCLUSIONS – LOCKUP STAGE

<b>Waste Treatment *</b>	Excluded - Self composting toilets and / or alternative black and grey water systems can be designed and supplied at an additional cost	<b>Wind Rating</b>	In accordance with required cyclone ratings 'C' or 'D'
<b>Architraves &amp; Skirtings</b>	Excluded	<b>Delivery</b>	Included
<b>Internal Doors</b>	Excluded	<b>Erection</b>	Included
<b>Floor coverings</b>	Excluded	<b>Soil Classification</b>	Included
<b>Heating &amp; Cooling</b>	Excluded	<b>Town Planning</b>	Excluded – This service can be provided at an additional cost
<b>Painting</b>	Excluded	<b>Building Permits</b>	Included subject to further clarification with local Authorities
<b>Water tanks *</b>	Excluded - Bladder bags or alternative sub-floor water storage tanks can be designed and supplied at an additional cost	<b>Supervision</b>	Included
<b>Energy Rating</b>	Included		

\* Optional Extra item not included in approximate cost

(page 2 of 2)

Multi-Award Winning Fire & Storm Resistant Buildings

Phone: 03 9642 7512



## FEATURES AND INCLUSIONS – KIT

<b>Steel Frame</b>	Engineered Designed galvanised light gauge high tensile roof, wall and floor framing	<b>External steps / Ramp</b>	Galvanised steel stringers with aluminium treads included for level site	<b>Floor coverings</b>	Excluded
<b>Roof &amp; Wall Cladding</b>	Colorbond corrugated iron sheeting	<b>Decking</b>	15mm thk compressed cement sheet	<b>Heating &amp; Cooling</b>	Excluded
<b>Guttering &amp; Rainwater goods</b>	Colorbond half round guttering, fascias, flashings and cappings	<b>Balustrading</b>	Galvanised steel framed SHS uprights and rails with 50mm x 50mm galvanised steel mesh infill panels	<b>Painting</b>	Excluded
<b>Operable Awnings &amp; RSD</b>	Colorbond corrugated iron cladding on steel framing including electric lineal actuators & remote controlled roller shutter door (Note: Designology to install and commission actuators)	<b>Lighting</b>	Excluded	<b>Water Tanks</b>	Excluded
<b>Internal Partition Walls</b>	90mm light gauge galvanised steel framing	<b>Electrical</b>	Excluded	<b>Energy Rating</b>	Excluded
<b>Ceiling Linings – Barrel vault section</b>	Excluded	<b>Plumbing</b>	Excluded	<b>Wind Rating</b>	In accordance with required cyclone ratings 'C' or 'D'
<b>Roof bracing – Barrel vault section</b>	Included	<b>Solar Hot Water</b>	Excluded	<b>Delivery</b>	Included using intermodal transport and subject to site inspection
<b>Wall Linings</b>	Excluded	<b>Robes</b>	Excluded	<b>Erection</b>	Excluded
<b>Insulation</b>	Roof / Ceiling : 7mm thk. Aircell Insulbreak 65 External Walls : 7mm thk. Aircell Insulbreak 65 Internal Walls : Not Included Sub-floor : Not Included	<b>Cabinetry</b>	Excluded	<b>Soil Classification</b>	Excluded
<b>Flooring</b>	19mm T & G CD grade plywood flooring to living areas and 18mm thk compressed cement sheet to wet areas	<b>Solar Power System</b>	Excluded	<b>Town Planning</b>	Excluded – This service can be provided at an additional cost
<b>Footings</b>	Excluded	<b>Waste Treatment</b>	Excluded	<b>Building Permits</b>	Excluded – This service can be provided at an additional cost
<b>Windows and Sliding Doors</b>	Excluded	<b>Architraves &amp; Skirtings</b>	Excluded	<b>Termite Barrier</b>	Excluded
<b>Roof Windows</b>	Powdercoated aluminium Velux double glazed argon filled & colorbond flashings	<b>Internal Doors</b>	Excluded	<b>Supervision</b>	Included – Designology to provide site inspections at milestone stages
<b>Flywire screens</b>	Excluded				

Multi-Award Winning Fire & Storm Resistant Buildings

Phone: 03 9642 7512